

CERTIFICATE OF LOCATION OF GOVERNMENT CORNER

NORTH 1/4 Corner of Section 4, Township 105, Range 42, 5th P.M.

STATE OF MINNESOTA, County of MURRAY

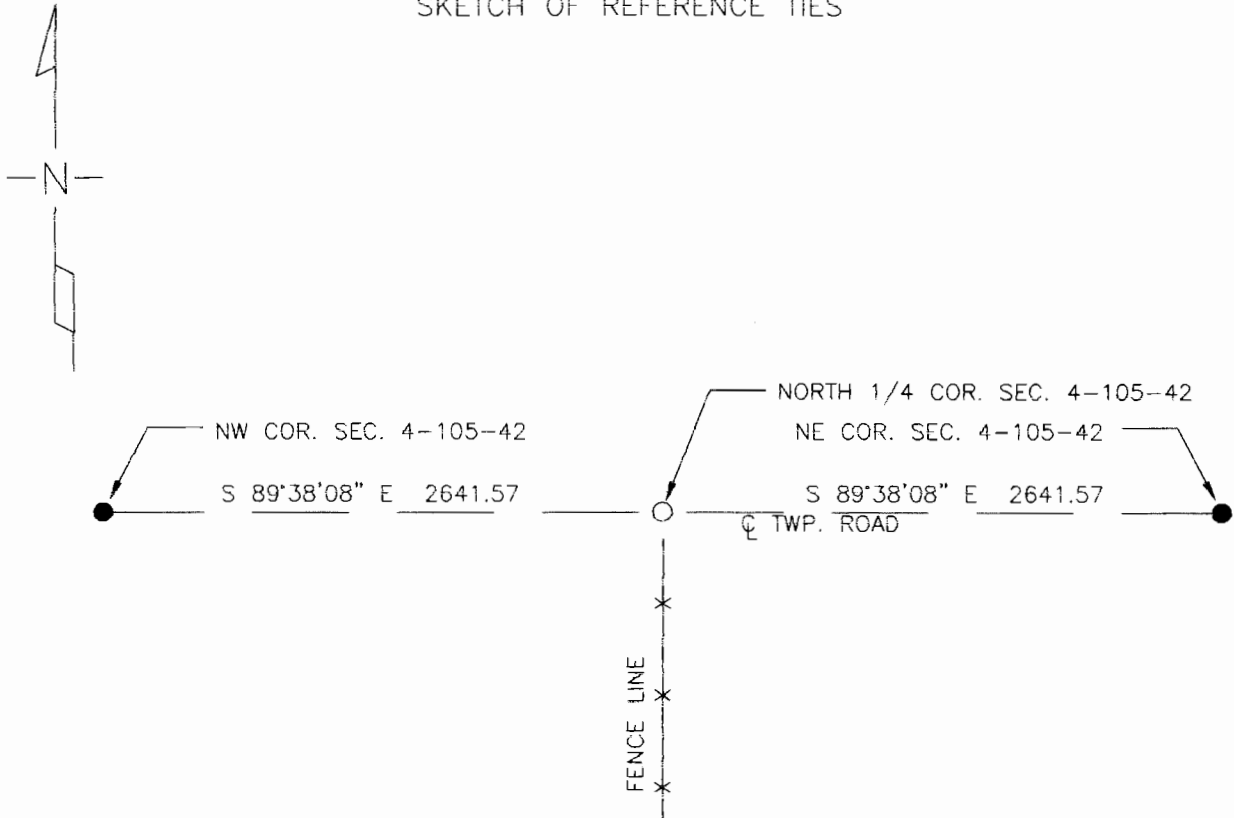
At the corner location shown on the sketch

On 11-09-00 found NO MONUMENT, DUG 6' X 16' X 4' DEEP HOLE IN SEARCH OF CORNER, NOTHING WAS FOUND.

left monument as found lowered monument, removed monument (explain)

On 11-17-00 placed a 1" IRON PIPE, WITH SURVEY CAP NO. 23008, MIDWAY & ON LINE BETWEEN SECTION CORNERS.

SKETCH OF REFERENCE TIES



Statement of evidence relative to this corner location is on back of page.

I hereby certify that this document and the data contained herein was prepared by me or under my direct supervision.

Perry L. Zieck 12-1-00
 SIGNATURE DATE

MN. REGISTRATION NO. 23008

- Land Surveyor, Professional Engineer
 County Surveyor, County Engineer

OFFICE OF THE COUNTY RECORDER

I hereby certify that this document was filed in the Co. Recorder's Office at _____ on the _____ day of DEC - 4 2000

County Recorder Jann V. Johnson
 By _____, Deputy
 DOCUMENT NO. _____